

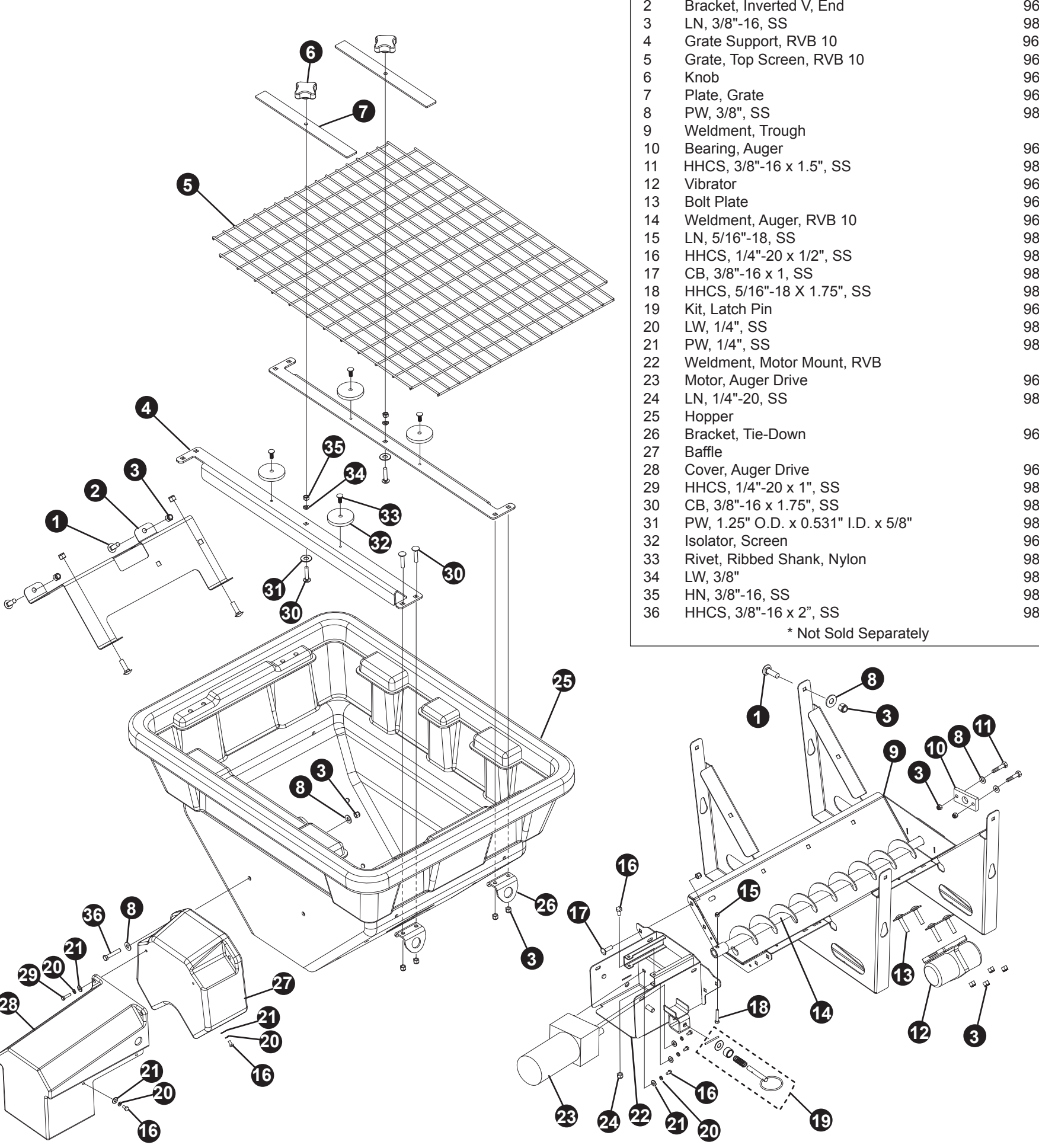
MECHANICAL PARTS & ACCESSORIES

MODEL RVB 10 V-BOX SPREADER

HOPPER AND AUGER DRIVE

| REF. NO. | DESCRIPTION | PART NO. |
|----------|-------------------------------------|----------|
| 1 | CB, 3/8"-16 x 1.25", SS | 98100356 |
| 2 | Bracket, Inverted V, End | 96116226 |
| 3 | LN, 3/8"-16, SS | 98100339 |
| 4 | Grate Support, RVB 10 | 96116414 |
| 5 | Grate, Top Screen, RVB 10 | 96116421 |
| 6 | Knob | 96116472 |
| 7 | Plate, Grate | 96116472 |
| 8 | PW, 3/8", SS | 98100124 |
| 9 | Weldment, Trough | NSS* |
| 10 | Bearing, Auger | 96114956 |
| 11 | HHCS, 3/8"-16 x 1.5", SS | 98100213 |
| 12 | Vibrator | 96114903 |
| 13 | Bolt Plate | 96116210 |
| 14 | Weldment, Auger, RVB 10 | 96116422 |
| 15 | LN, 5/16"-18, SS | 98100118 |
| 16 | HHCS, 1/4"-20 x 1/2", SS | 98100344 |
| 17 | CB, 3/8"-16 x 1.5", SS | 98100359 |
| 18 | HHCS, 5/16"-18 x 1.75", SS | 98100115 |
| 19 | Kit, Latch Pin | 96115505 |
| 20 | LW, 1/4", SS | 98009226 |
| 21 | PW, 1/4", SS | 98100122 |
| 22 | Weldment, Motor Mount, RVB | NSS* |
| 23 | Motor, Auger Drive | 96114805 |
| 24 | LN, 1/4"-20, SS | 98100336 |
| 25 | Hopper | NSS* |
| 26 | Bracket, Tie-Down | 96116412 |
| 27 | Baffle | NSS* |
| 28 | Cover, Auger Drive | 96116363 |
| 29 | HHCS, 1/4"-20 x 1", SS | 98100496 |
| 30 | CB, 3/8"-16 x 1.75", SS | 98100356 |
| 31 | PW, 1.25" O.D. x 0.531" I.D. x 5/8" | 98100347 |
| 32 | Isolator, Screen | 96115013 |
| 33 | Rivet, Ribbed Shank, Nylon | 98100590 |
| 34 | LW, 3/8" | 98100125 |
| 35 | HN, 3/8"-16, SS | 98100120 |
| 36 | HHCS, 3/8"-16 x 2", SS | 98100541 |

* Not Sold Separately

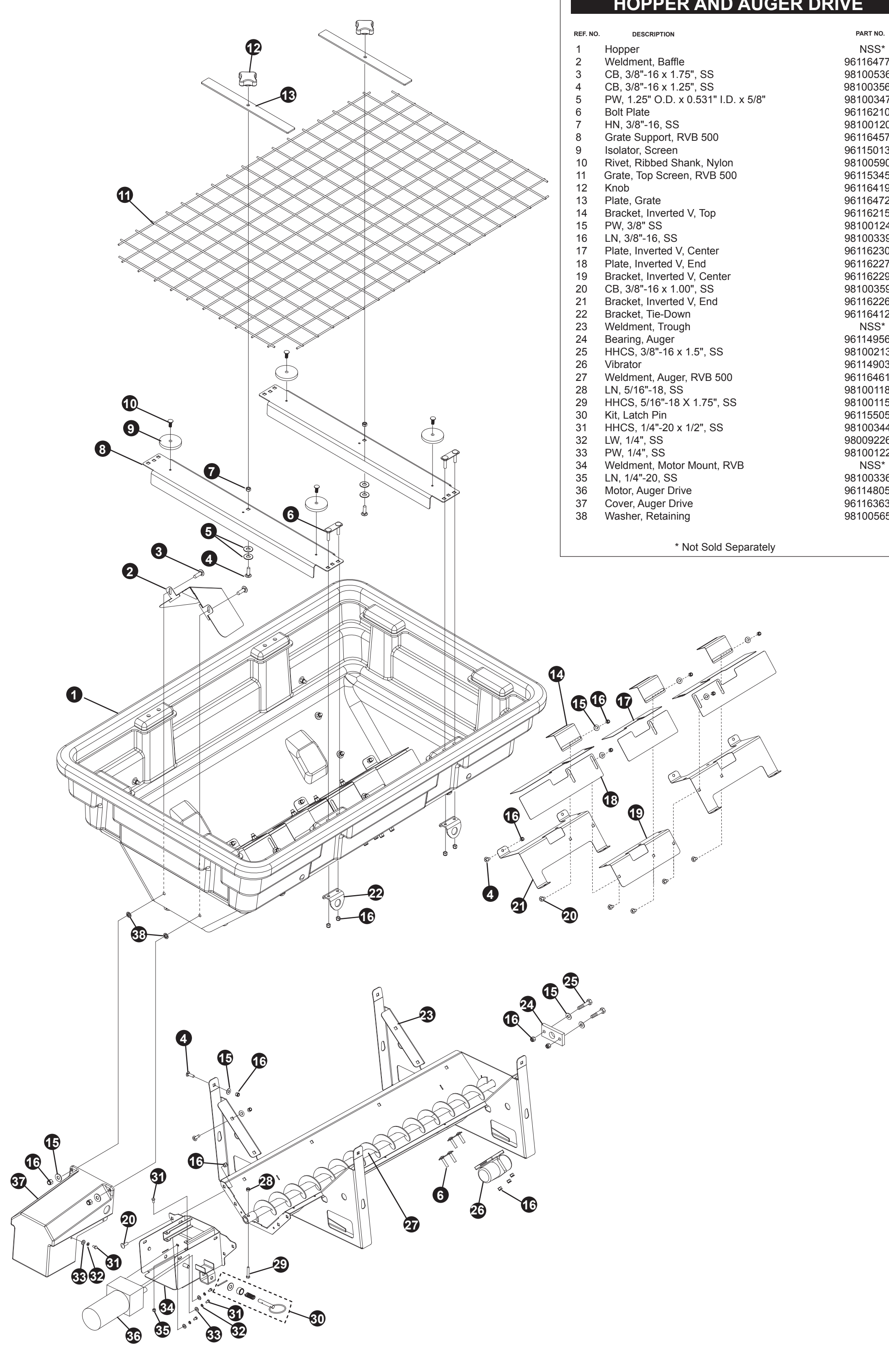


MODEL RVB 500 V-BOX SPREADER

HOPPER AND AUGER DRIVE

| REF. NO. | DESCRIPTION | PART NO. |
|----------|-------------------------------------|----------|
| 1 | Hopper | NSS* |
| 2 | Weldment, Baffle | 96116477 |
| 3 | CB, 3/8"-16 x 1.75", SS | 98100356 |
| 4 | CB, 3/8"-16 x 1.25", SS | 98100356 |
| 5 | PW, 1.25" O.D. x 0.531" I.D. x 5/8" | 98100347 |
| 6 | Bolt Plate | 96116210 |
| 7 | HN, 3/8"-16, SS | 98100120 |
| 8 | Grate Support, RVB 500 | 96116457 |
| 9 | Isolator, Screen | 96115013 |
| 10 | Rivet, Ribbed Shank, Nylon | 98100590 |
| 11 | Grate, Top Screen, RVB 500 | 96115345 |
| 12 | Knob | 96116472 |
| 13 | Plate, Grate | 96116472 |
| 14 | Bracket, Inverted V, Top | 96116215 |
| 15 | PW, 3/8" SS | 98100124 |
| 16 | LN, 3/8"-16, SS | 98100339 |
| 17 | Plate, Inverted V, Center | 96116230 |
| 18 | Plate, Inverted V, End | 96116227 |
| 19 | Bracket, Inverted V, Center | 96116229 |
| 20 | CB, 3/8"-16 x 1.00", SS | 98100359 |
| 21 | Bracket, Inverted V, End | 96116226 |
| 22 | Bracket, Tie-Down | 96116412 |
| 23 | Weldment, Trough | NSS* |
| 24 | Bearing, Auger | 96114956 |
| 25 | HHCS, 3/8"-16 x 1.5", SS | 98100213 |
| 26 | Vibrator | 96114903 |
| 27 | Weldment, Auger, RVB 500 | 96116461 |
| 28 | LN, 5/16"-18, SS | 98100118 |
| 29 | HHCS, 5/16"-18 x 1.75", SS | 98100115 |
| 30 | Kit, Latch Pin | 96115505 |
| 31 | HHCS, 1/4"-20 x 1/2", SS | 98100344 |
| 32 | LW, 1/4", SS | 98009226 |
| 33 | PW, 1/4", SS | 98100122 |
| 34 | Weldment, Motor Mount, RVB | NSS* |
| 35 | LN, 1/4"-20, SS | 98100336 |
| 36 | Motor, Auger Drive | 96114805 |
| 37 | Cover, Auger Drive | 96116363 |
| 38 | Washer, Retaining | 98100565 |

* Not Sold Separately

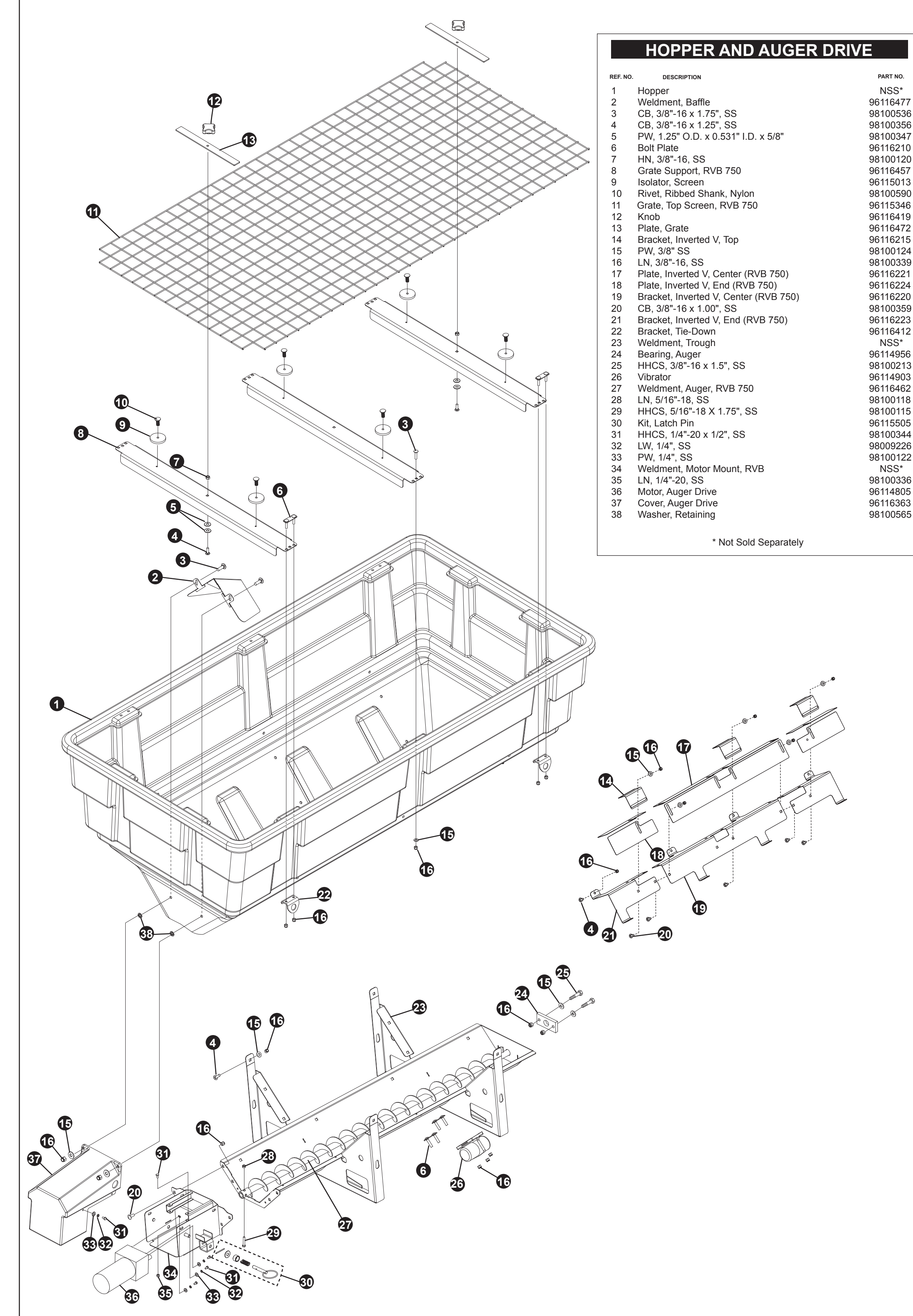


MODEL RVB 750 V-BOX SPREADER

HOPPER AND AUGER DRIVE

| REF. NO. | DESCRIPTION | PART NO. |
|----------|---------------------------------------|----------|
| 1 | Hopper | NSS* |
| 2 | Weldment, Baffle | 96116477 |
| 3 | CB, 3/8"-16 x 1.75", SS | 98100356 |
| 4 | CB, 3/8"-16 x 1.25", SS | 98100356 |
| 5 | PW, 1.25" O.D. x 0.531" I.D. x 5/8" | 98100347 |
| 6 | Bolt Plate | 96116210 |
| 7 | HN, 3/8"-16, SS | 98100120 |
| 8 | Grate Support, RVB 750 | 96116457 |
| 9 | Isolator, Screen | 96115013 |
| 10 | Rivet, Ribbed Shank, Nylon | 98100590 |
| 11 | Grate, Top Screen, RVB 750 | 96115346 |
| 12 | Knob | 96116472 |
| 13 | Plate, Grate | 96116472 |
| 14 | Bracket, Inverted V, Top | 96116215 |
| 15 | PW, 3/8" SS | 98100124 |
| 16 | LN, 3/8"-16, SS | 98100339 |
| 17 | Plate, Inverted V, Center (RVB 750) | 96116221 |
| 18 | Plate, Inverted V, End (RVB 750) | 96116224 |
| 19 | Bracket, Inverted V, Center (RVB 750) | 96116220 |
| 20 | CB, 3/8"-16 x 1.00", SS | 98100359 |
| 21 | Bracket, Inverted V, End (RVB 750) | 96116223 |
| 22 | Bracket, Tie-Down | 96116412 |
| 23 | Weldment, Trough | NSS* |
| 24 | Bearing, Auger | 96114956 |
| 25 | HHCS, 3/8"-16 x 1.5", SS | 98100213 |
| 26 | Vibrator | 96114903 |
| 27 | Weldment, Auger, RVB 750 | 96114903 |
| 28 | LN, 5/16"-18, SS | 98100118 |
| 29 | HHCS, 5/16"-18 x 1.75", SS | 98100115 |
| 30 | Kit, Latch Pin | 96115505 |
| 31 | HHCS, 1/4"-20 x 1/2", SS | 98100344 |
| 32 | LW, 1/4", SS | 98009226 |
| 33 | PW, 1/4", SS | 98100122 |
| 34 | Weldment, Motor Mount, RVB | NSS* |
| 35 | LN, 1/4"-20, SS | 98100336 |
| 36 | Motor, Auger Drive | 96114805 |
| 37 | Cover, Auger Drive | 96116363 |
| 38 | Washer, Retaining | 98100565 |

* Not Sold Separately

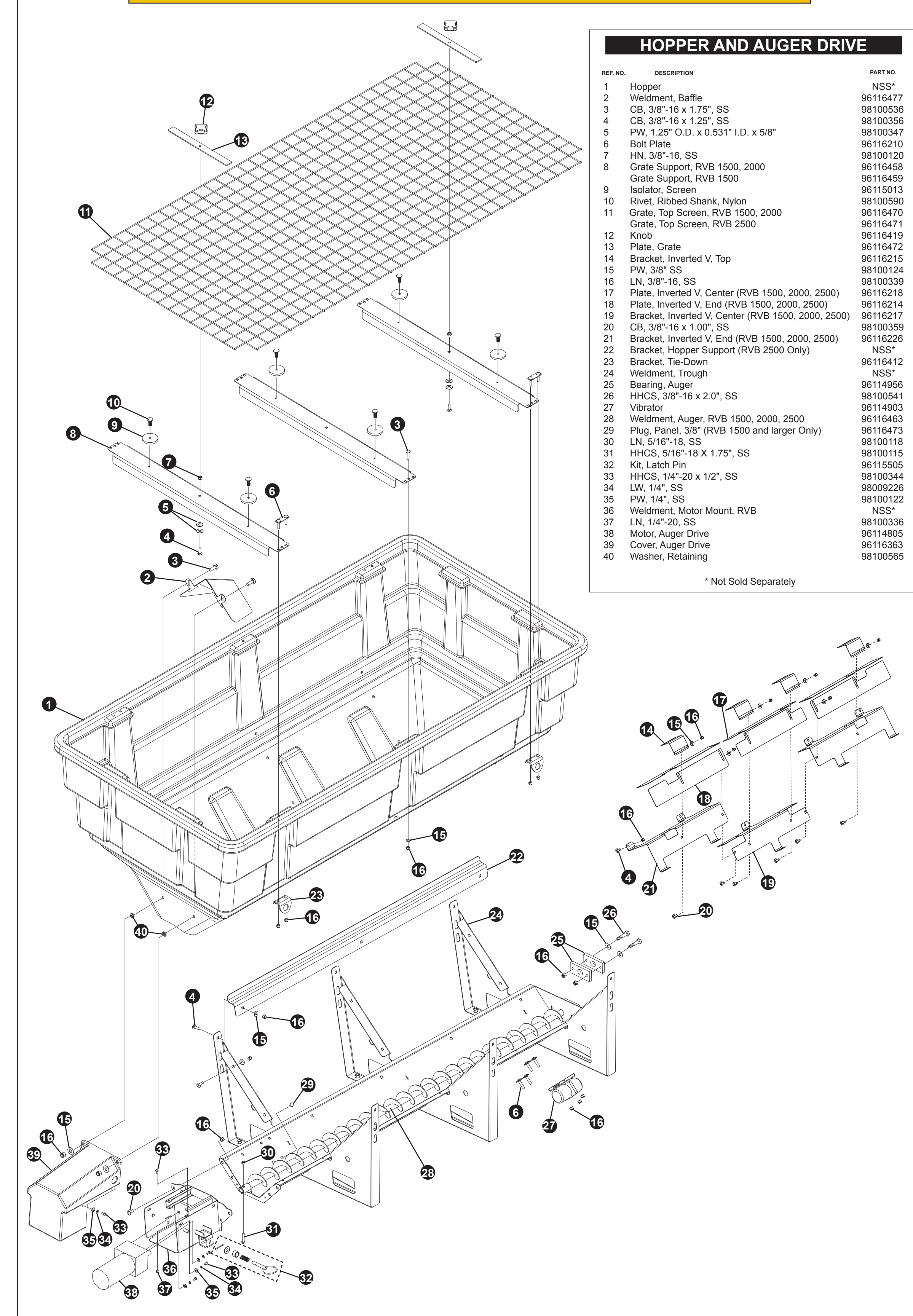


MODEL RVB 1500, 2000, 2500 V-BOX SPREADERS

HOPPER AND AUGER DRIVE

| REF. NO. | DESCRIPTION | PART NO. |
|----------|--|----------|
| 1 | Hopper | NSS* |
| 2 | Weldment, Baffle | 96116477 |
| 3 | CB, 3/8"-16 x 1.75", SS | 98100356 |
| 4 | CB, 3/8"-16 x 1.25", SS | 98100356 |
| 5 | PW, 1.25" O.D. x 0.531" I.D. x 5/8" | 98100347 |
| 6 | Bolt Plate | 96116210 |
| 7 | HN, 3/8"-16, SS | 98100120 |
| 8 | Grate Support, RVB 1500, 2000 | 96116457 |
| 9 | Isolator, Screen | 96115013 |
| 10 | Rivet, Ribbed Shank, Nylon | 98100590 |
| 11 | Grate, Top Screen, RVB 1500, 2000 | 96116471 |
| 12 | Knob | 96116472 |
| 13 | Plate, Grate | 96116472 |
| 14 | Bracket, Inverted V, Top | 96116215 |
| 15 | PW, 3/8" SS | 98100124 |
| 16 | LN, 3/8"-16, SS | 98100339 |
| 17 | Plate, Inverted V, Center (RVB 1500, 2000, 2500) | 96116221 |
| 18 | Plate, Inverted V, End (RVB 1500, 2000, 2500) | 96116224 |
| 19 | Bracket, Inverted V, Center (RVB 1500, 2000, 2500) | 96116220 |
| 20 | CB, 3/8"-16 x 1.00", SS | 98100359 |
| 21 | Bracket, Inverted V, End (RVB 1500, 2000, 2500) | 96116226 |
| 22 | Bracket, Hopper Support (RVB 2500 Only) | 96116412 |
| 23 | Bracket, Tie-Down | 96116412 |
| 24 | Weldment, Trough | NSS* |
| 25 | Bearing, Auger | 96114956 |
| 26 | HHCS, 3/8"-16 x 2.0", SS | 98100541 |
| 27 | Vibrator | 96114903 |
| 28 | Weldment, Auger, RVB 1500, 2000, 2500 | 96116463 |
| 29 | Plug, Panel, 3/8" (RVB 1500 and larger Only) | 96116473 |
| 30 | LN, 5/16"-18, SS | 98100118 |
| 31 | HHCS, 5/16"-18 x 1.75", SS | 98100115 |
| 32 | Kit, Latch Pin | 96115505 |
| 33 | HHCS, 1/4"-20 x 1/2", SS | 98100344 |
| 34 | LW, 1/4", SS | 98009226 |
| 35 | PW, 1/4", SS | 98100122 |
| 36 | Weldment, Motor Mount, RVB | NSS* |
| 37 | LN, 1/4"-20, SS | 98100336 |
| 38 | Motor, Auger Drive | 96114805 |
| 39 | Cover, Auger Drive | 96116363 |
| 40 | Washer, Retaining | 98100565 |

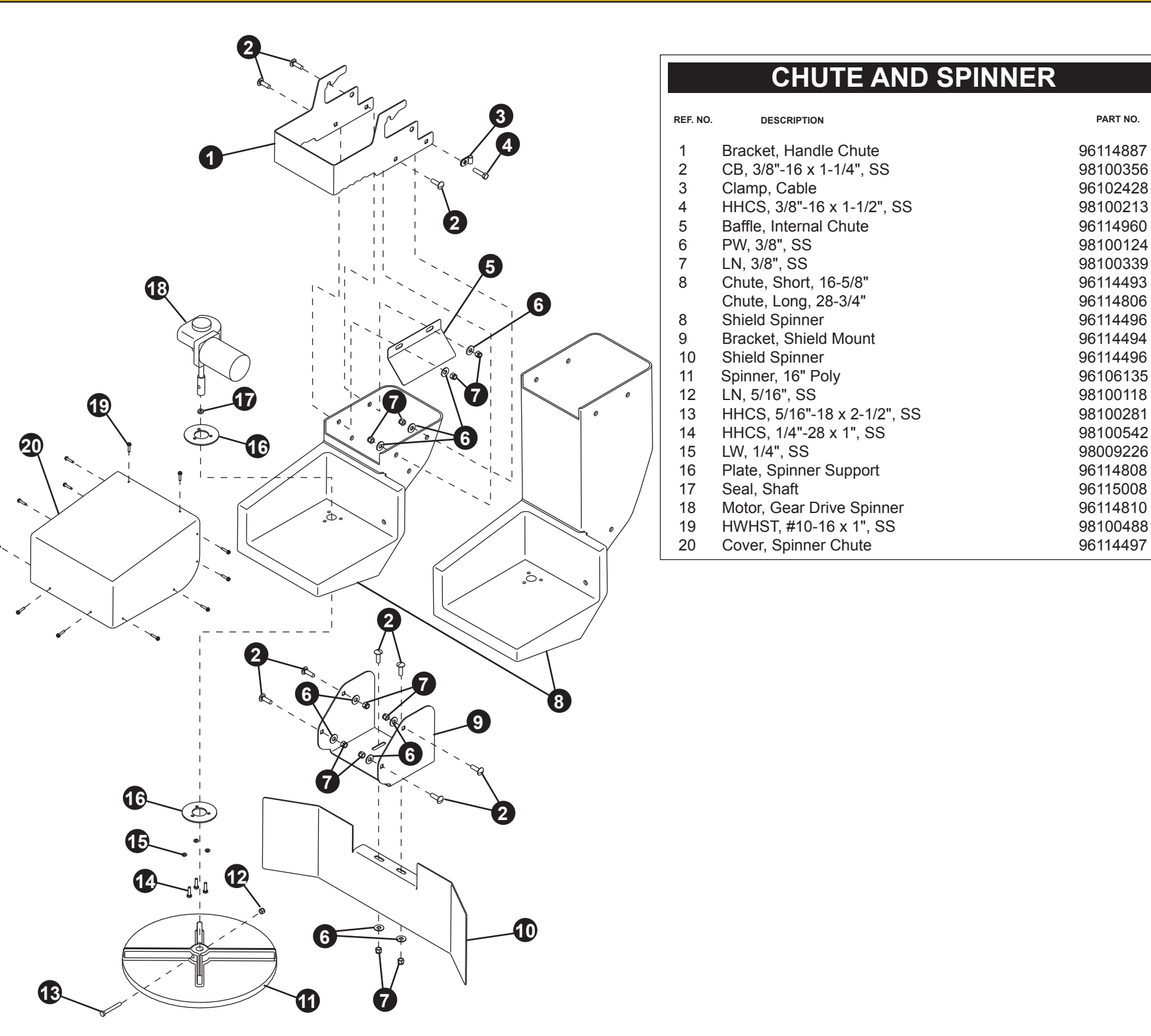
* Not Sold Separately



CHUTE AND SPINNER (ALL MODELS)

CHUTE AND SPINNER

| REF. NO. | DESCRIPTION | PART NO. |
|----------|-----------------------------|----------|
| 1 | Bracket, Handle Chute | 96114887 |
| 2 | CB, 3/8"-16 x 1-1/4", SS | 98100356 |
| 3 | Clamp, Cable | 96102428 |
| 4 | HHCS, 3/8"-16 x 1-1/2", SS | 98100213 |
| 5 | Baffle, Internal Chute | 96114960 |
| 6 | PW, 3/8", SS | 98100124 |
| 7 | LN, 3/8", SS | 98100339 |
| 8 | Chute, Short, 16-5/8" | 96114463 |
| 9 | Chute, Long, 28-3/4" | 96114806 |
| 10 | Shield Spinner | 96114496 |
| 11 | Bracket, Shield Mount | 96114494 |
| 12 | Spinner, 16" Poly | 96108135 |
| 13 | LN, 5/16", SS | 98100118 |
| 14 | HHCS, 5/16"-18 x 2-1/2", SS | 98100281 |
| 15 | LW, 1/4", SS | 98009226 |
| 16 | Plate, Spinner Support | 96114808 |
| 17 | Seal, Shaft | 96115008 |
| 18 | Motor, Gear Drive Spinner | 96114810 |
| 19 | HWHST, #10-16 x 1", SS | 98100488 |
| 20 | Cover, Spinner Chute | 96114497 |



Sno-Way International, Inc.
Hartford, Wisconsin 53207
www.snoway.com