



## **ASSEMBLY & INSTALLATION INSTRUCTIONS**

**VEHICLE MOUNT KIT 99101426  
AND  
VEHICLE CENTER MEMBER 96114780**

**TO FIT  
2019 & Later - CFMOTO UFORCE 1000**

Sno-Way<sup>®</sup>, Down Pressure<sup>®</sup> and EIS<sup>®</sup> are registered trademarks of Sno-Way International, Inc.  
ProControl<sup>™</sup>, MegaBlade<sup>™</sup>, V-Wing<sup>™</sup>, E-Z Switch<sup>™</sup>, Revolution<sup>™</sup>, MaxAdjust<sup>™</sup>, SpeedLock<sup>™</sup>, and QuickJack<sup>™</sup>  
are trademarks of Sno-Way International, Inc.

©2024 Sno-Way<sup>®</sup> International

97102458B



1. THINK SAFETY, ALWAYS WEAR SAFETY GLASSES WHEN PERFORMING THE OPERATIONS PRESCRIBED IN THESE INSTRUCTIONS
2. READ ALL INSTRUCTIONS CAREFULLY BEFORE ATTEMPTING INSTALLATION
3. BEFORE BEGINNING WORK MAKE SURE TO SET PARKING BRAKE AND CHOCK WHEELS



## MINIMUM VEHICLE RECOMMENDATIONS

Heavy Duty Alternator

Heavy Duty Battery

## INSTALLATION NOTES

1. Unless otherwise specified, mount all Vehicle Mount Kit components to vehicle before tightening any hardware.
2. It is recommended that LOCTITE®, or similar thread locking product, be used on ALL mounting hardware (i.e. Nuts, Cap Screws, Bolts, etc.).
3. Vehicle should be parked on a level surface with a normal vehicle load on the FRONT suspension.
4. Items in parentheses ( ) refer to quantity required for this step. Items in parentheses with a pound sign (#) indicate the part number as found in the parts list on the last page of this document.  
Example: (10) Washer, Lock, 1/2" (#8).

*NOTE: On some vehicles it may be necessary to use a form of load booster to decrease the vehicle's front suspension sag with the snow plow in place. This can be accomplished with the use of supplementary air bags, booster springs, or similar load boosting devices. Since there are different load boosting devices available, it will up to the customer/end user to decide and purchase the product to suit the application, and not the responsibility of Sno-Way International, Inc.*

## ASSEMBLY TOOLS NEEDED

Impact Sockets	9/16"
	5mm – 16mm
Wrenches	9/16"
	5mm – 16mm
Torque Wrench	
Tape Measure	

## MOUNTING INSTRUCTIONS

1. The 2" receiver hitch is standard on the UTV and must be removed to install the mount kit. Keep the M8 hardware for use later in this installation. If the hitch is not present, check the glovebox for the hardware. If the hardware cannot be found, contact your UTV dealer. (See Figure 1).



Figure 1

2. Slide the Top Support Weldment (#4) behind the brush guard and twist into position so the front of the weldment sticks through the opening in the brush guard. Mount the back of the Top Support Weldment (#4) to the angled UTV frame and secure with (2) 3/8"-16 x 2-1/2" Cap Screws (#5) and (2) 3/8"-16 Locknuts (#9) (See Figure 2).

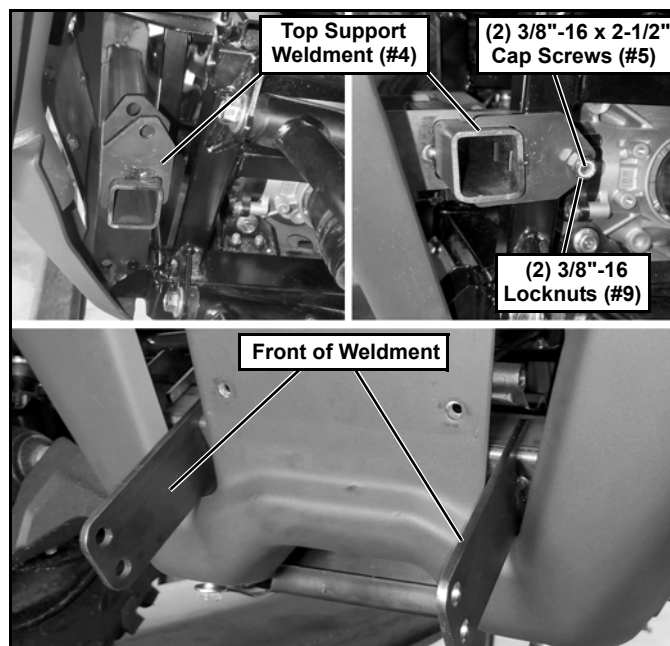


Figure 2

- Remove and retain the M10 bolts from the bottom of the brush guard. Align the Bottom Mount Weldment (#3) with the holes and install the M10 bolts to hold the weldment in position (See Figure 3).

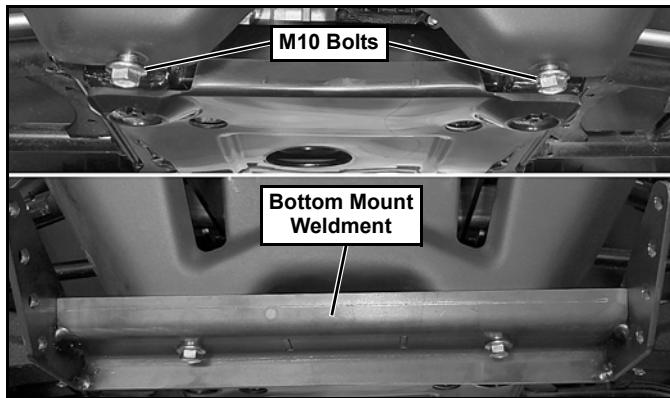


Figure 3

- Attach the Front Mount Weldment (#2) where the 2" receiver hitch was attached. Secure into position with M8 bolts that were removed from the hitch. Also, secure the Top Support Weldment (#4) to the Front Mount Weldment (#2) with (4) 3/8"-16 X 1" Cap Screws (#6) and (4) 3/8"-16 Locknuts (#9) (See Figure 4).

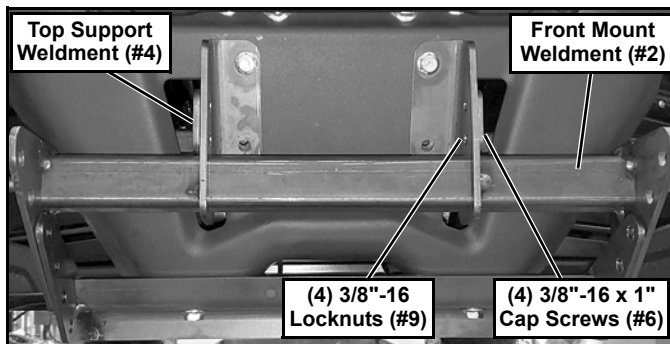


Figure 4

- Align the UTV Mount (#1) with the side holes of the Front and Bottom Mount Weldments (#2 & 3) (See Figure 5). Adjust the height of the UTV Mount (#1) so the center of the bottom slot is 11"-12" off the ground (See Figure 6).

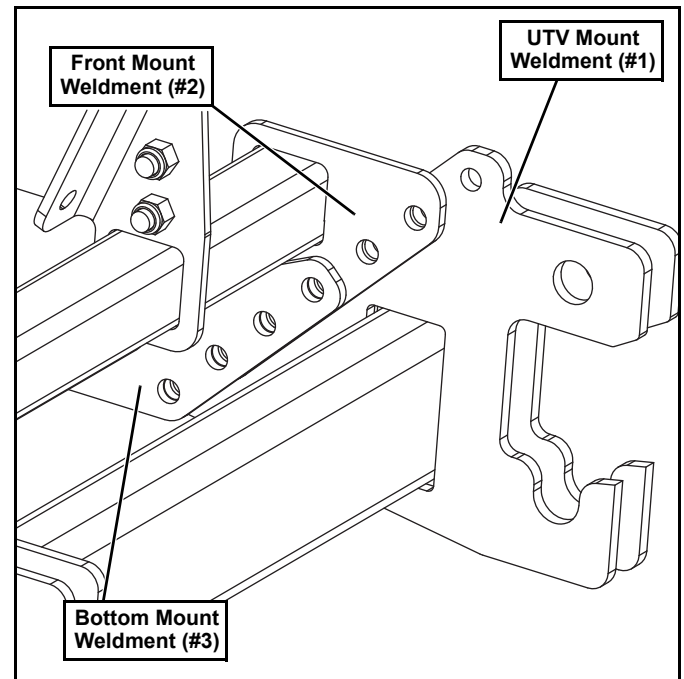


Figure 5

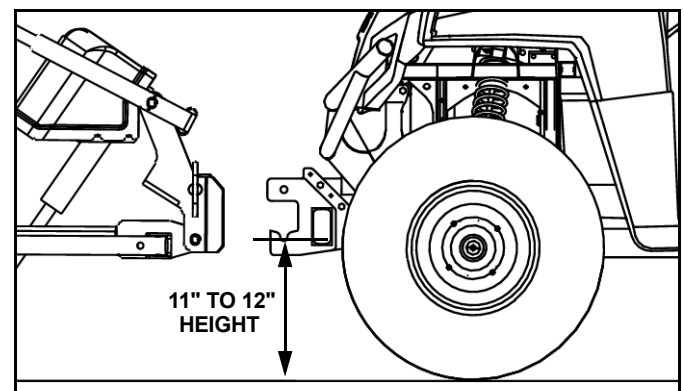


Figure 6

6. Secure the UTV Mount (#1) with (8) 3/8"-16 x 1-1/4" Cap Screws (#7), (6) 3/8" Plain Washer (#8) and (8) 3/8"-16 Locknuts (#9). If the UTV Mount (#1) is position as shown or any lower, place (3) 3/8" Plain Washer (#8), per side, between itself and the lowest hole of the Bottom Mount Weldment (#3). (See Figure 7).

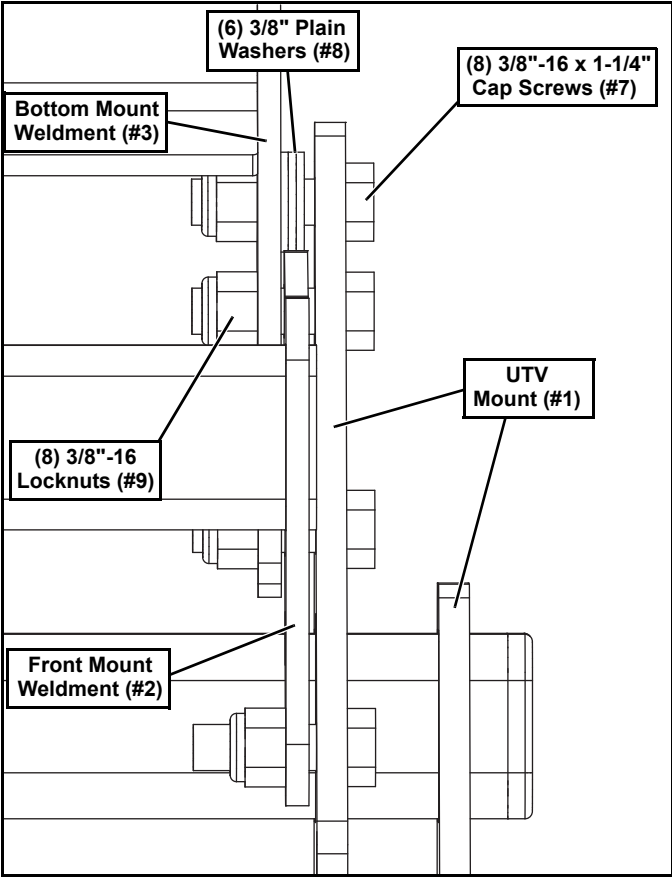


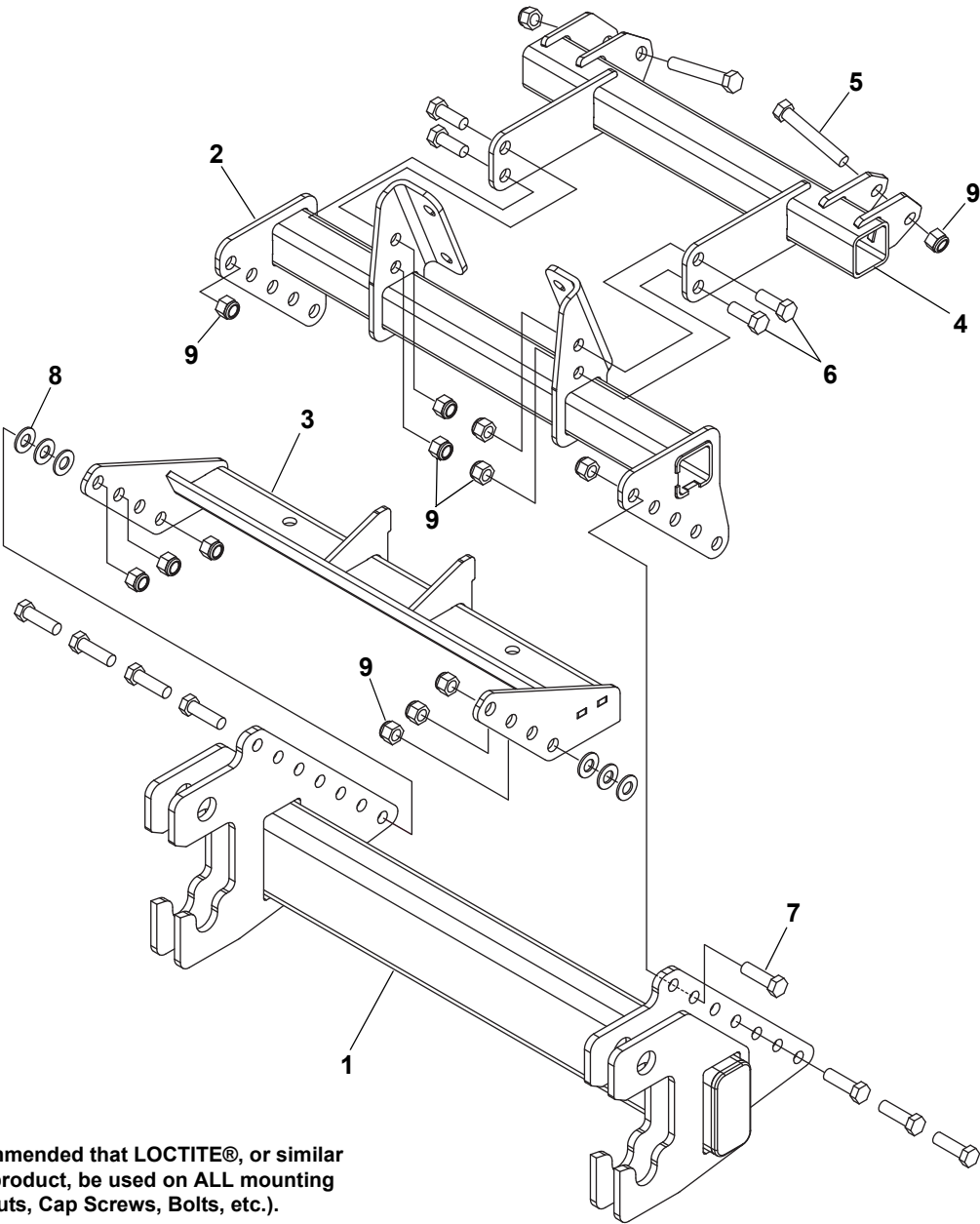
Figure 7

7. Tighten all hardware using the Torque Specification Chartbelow.

TORQUE SPECIFICATIONS FOR STANDARD MACHINE HARDWARE					
Bolt Size	GR.2 Dry	GR.5 Dry	GR.8 Dry	Metric Size	GR.8.8 Dry
1/4"	66*	9	12	M8	17
5/16"	11	17	25	M10	35
3/8"	20	30	45	M12	60
7/16"	32	50	70	M14	95
1/2"	50	75	110	M16	155
9/16"	70	110	150		
5/8"	100	150	220		
3/4"	175	260	380		
7/8"	170	430	600		
1"	250	640	900		
Note: These torque values are to be used for all hardware. Unless otherwise specified, all torque values must meet this specification.					
Note: All torque values are in Ft.-Lbs unless otherwise stated					
Note: *In-Lbs					

**NOTE: After 5 to 10 hours of snowplow usage, re-torque all Cap Screws!**

# PARTS LIST



**Note:** It is recommended that LOCTITE®, or similar thread locking product, be used on ALL mounting hardware (i.e. Nuts, Cap Screws, Bolts, etc.).

ITEM	PART NO.	DESCRIPTION	QTY.
1	96114780	Vehicle Center Member, UTV (Not Included) .....	1
2		Weldment, Front Mount .....	1
3		Weldment, Bottom Mount .....	1
4		Weldment, Top Support .....	1
5	96118777	HHCS, 3/8"-16 x 2-1/2" .....	2
6		HHCS, 3/8"-16 x 1" .....	4
7		HHCS, 3/8"-16 x 1-1/4" .....	8
8		PW, 3/8" .....	6
9		LN, 3/8"-16 .....	14
10		Kit, HDWE (Includes items 5-9) (Not Shown) .....	1

## NOTES

## NOTES

---

**SNO-WAY® INTERNATIONAL, INC.**



Hartford, WI 53027 USA  
Website: [www.snoway.com](http://www.snoway.com)  
©2024 Sno-Way® International