



ASSEMBLY & INSTALLATION INSTRUCTIONS

**VEHICLE MOUNT KIT 99101522
FOR 26 PLOW SERIES ONLY
(Includes Vehicle Center Member)**

**TO FIT
2024 & LATER FORD RANGER**

Sno-Way®, Down Pressure®, ESS®, Smart Sight®, and Smart Flash® are registered trademarks of Sno-Way International, Inc.
ProControl™, E-Z Switch™, Revolution™, MaxAdjust™ and SpeedLock™ are trademarks of Sno-Way International, Inc.

©2024 Sno-Way® International

97102517A



1. THINK SAFETY, ALWAYS WEAR SAFETY GLASSES WHEN PERFORMING THE OPERATIONS PRESCRIBED IN THESE INSTRUCTIONS
2. READ ALL INSTRUCTIONS CAREFULLY BEFORE ATTEMPTING INSTALLATION
3. BEFORE BEGINNING WORK MAKE SURE TO SET PARKING BRAKE AND CHOCK WHEELS



MINIMUM VEHICLE RECOMMENDATIONS

Heavy Duty Alternator

Heavy Duty Battery

NOTE: On some vehicles it may be necessary to use a form of load booster to decrease the vehicle's front suspension sag with the snow plow in place. This can be accomplished with the use of supplementary air bags, booster springs, or similar load boosting devices. Since there are different load boosting devices available, it will up to the customer/end user to decide and purchase the product to suit the application, and not the responsibility of Sno-Way International, Inc.

ASSEMBLY TOOLS NEEDED

Impact and Regular Sockets

3/4"

Impact Sockets Metric

10mm – 19mm

Wrenches

3/4"

Screwdrivers

Torque Wrench

INSTALLATION NOTES

1. Unless otherwise specified, mount all Subframe components to vehicle before tightening any hardware.
2. It is recommended that LOCTITE®, or similar thread locking product, be used on ALL mounting hardware (i.e. Nuts, Cap Screws, Bolts, etc.).
3. Vehicle should be parked on a level surface with a normal vehicle load on the FRONT suspension.
4. Items in parentheses () refer to quantity required for this step. Items in parentheses with a pound sign (#) indicate the part number as found in the parts list on the last page of this document.
Example: (2) 1/2"-13 x 2" Cap Screws (#5).
5. It maybe necessary to relocate license plate holder. Relocate under the driver's side headlight by drilling new holes in the bumper. Check state and local laws for placement, if needed.

NOTE: The tow hooks hold multiple parts at one time, so if both are removed together the intercooler will not have any support.

2. Remove only the driver side tow hook and the shroud over the tow hook attached to the bumper. Retain the tow hook hardware for installing the Driver Side Mount Weldment (#2) (See Figure 1-2).

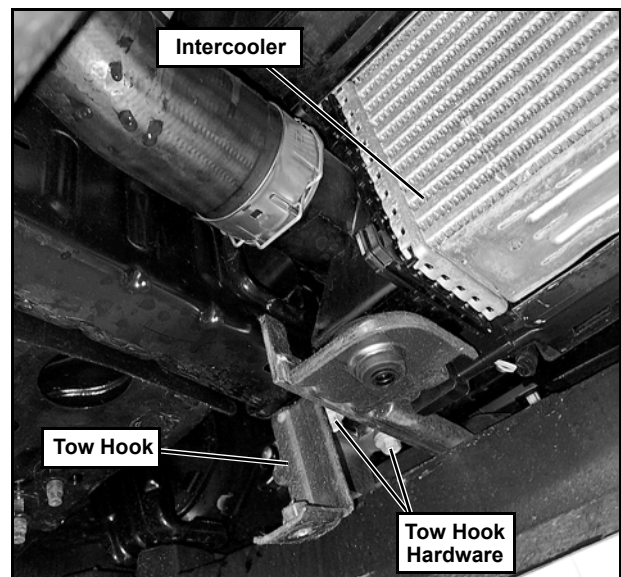


Figure 1-2

MOUNTING INSTRUCTIONS

1. Remove the splash guard and lower facia from under the bumper. Retain the parts and hardware for possible re-installation (See Figure 1-1).

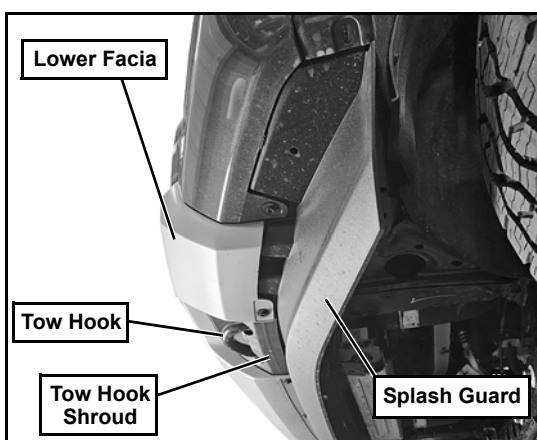


Figure 1-1

3. Align the Driver Side Mount Weldment (#2) to the Driver side frame rail. Be sure weldment fits around the intercooler mount. Secure with (2) tow hook screws, (1) intercooler screw, (1) 3/8"-16 x 4" Cap Screw (#4), (1) 1/2" Plain Washer (#7), (1) 3/8" Plain Washer (#8), (1) 3/8"-16 Locknut (#9). Be sure not to crush the frame rail when torquing the 3/8"-16 hardware (See Figure 1-3).

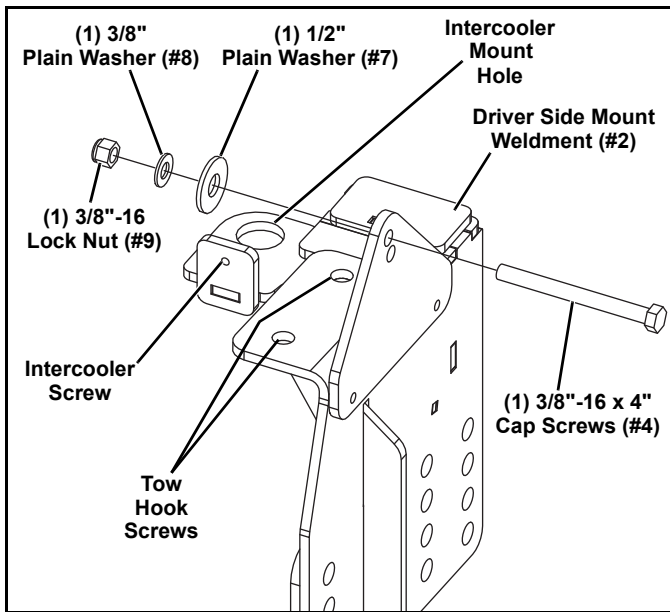


Figure 1-3

4. Repeat steps 2 & 3 for installing the Passenger Side Mount Weldment (#3) (See Figure 1-4).

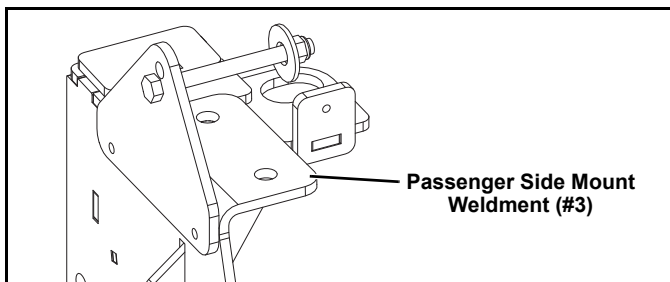


Figure 1-4

5. Attach the Vehicle Center Member (#1) to the Mount Weldments (#2 & 3) with (8) 1/2"-13 x 1-3/4" Cap Screws (#5), (2) 1/2" Lock Washers (#6), and (6) 1/2"-13 Lock Nuts (#10) (See Figure 1-5).

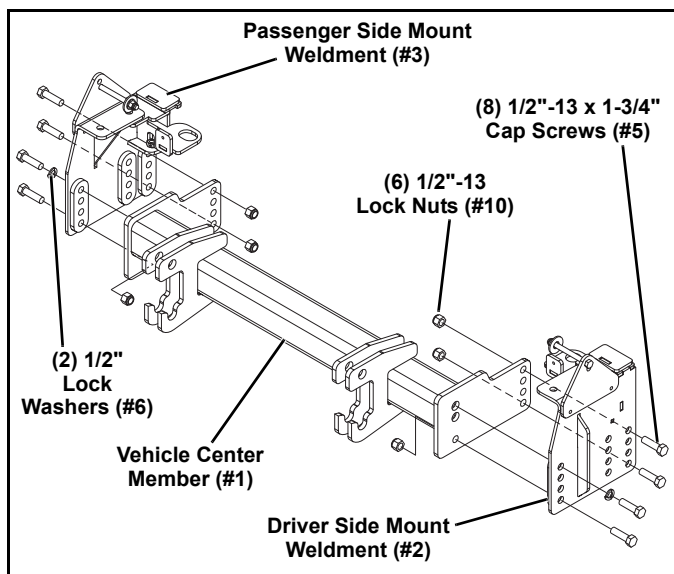


Figure 1-5

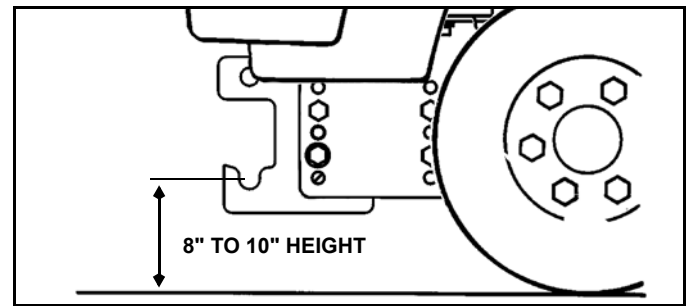


Figure 1-6

IMPORTANT: Height from the center of the lower flow mounting holes on the Subframe to the ground should be between 8" and 10" to insure proper operation (See Figure 1-6).

6. Tighten all hardware using the torque specification chart provided.
7. Re-install the splash guard if desired. Some cutting may be needed to fit around the Mounting Weldments (#2 & 3), but there is hardware to re-use the screws that held the splash shield in place.

**TORQUE SPECIFICATIONS FOR
STANDARD MACHINE HARDWARE**

Bolt Size	GR.2 Dry	GR.5 Dry	GR.8 Dry	Metric Size	GR.8.8 Dry
1/4"	66*	9	12	M8	17
5/16"	11	17	25	M10	35
3/8"	20	30	45	M12	60
7/16"	32	50	70	M14	95
1/2"	50	75	110	M16	155
9/16"	70	110	150		
5/8"	100	150	220		
3/4"	175	260	380		
7/8"	170	430	600		
1"	250	640	900		

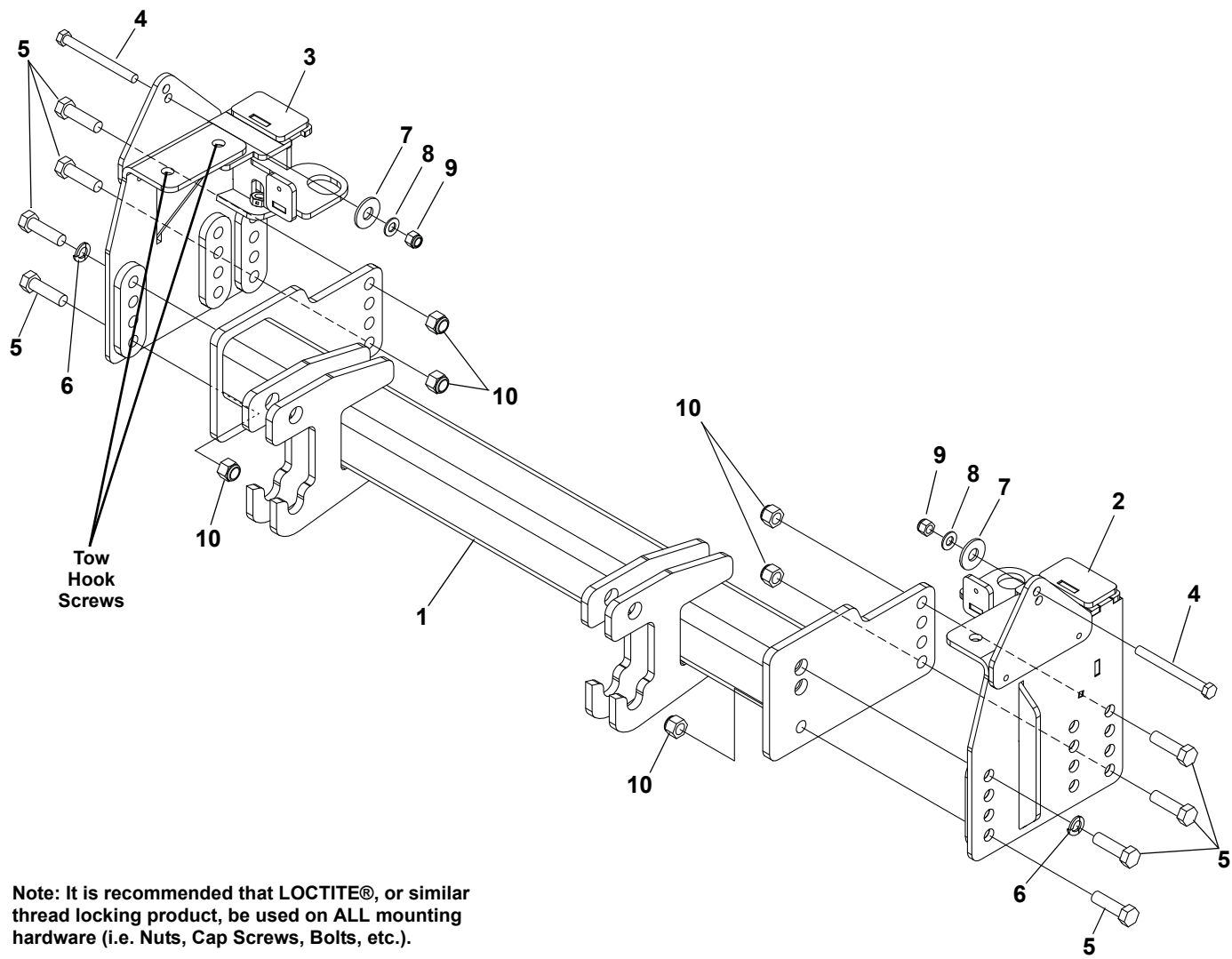
These torque values are to be used for all hardware. Unless otherwise specified, all torque values must meet this specification.

All torque values are in Ft.-Lbs unless otherwise stated

*In-Lbs

REMEMBER After 5 to 10 hours of snowplow usage, re-torque all Cap Screws!

PARTS LIST



Note: It is recommended that LOCTITE®, or similar thread locking product, be used on ALL mounting hardware (i.e. Nuts, Cap Screws, Bolts, etc.).

ITEM	PART NO.	DESCRIPTION	QTY.
1		Vehicle Center Member	1
2		Weldment, Mount, Driver Side	1
3		Weldment, Mount, Passenger Side	1
4		HHCS, 3/8"-16 x 4"	2
5		HHCS, 1/2"-13 x 1-3/4"	8
6		LW, 1/2"	2
7		PW, 1/2"	2
8		PW, 3/8"	2
9		LN, 3/8"-16	2
10		LN, 1/2"-13	6
11	96118998	Kit, Hardware (Includes items 4-10)	1

SNO-WAY® INTERNATIONAL, INC.



Hartford, WI 53027 USA
Website: www.snoway.com
©2024 Sno-Way® International